

## SMTM MICRO S-TYPE LOAD CELL

### FEATURES & BENEFITS

- Capacity 5, 25, 50 lbf (20, 100, 200 N)
- Can be used in tension & compression
- Micro sized – 0.68 x 0.75 x 0.29 in (17.3 x 19.1 x 7.3 mm)
- Excellent temperature compensation (0.005% / °F temperature effect on output)

### SPECIFICATIONS

ACCURACY – (MAX ERROR)		
Nonlinearity – %FS		±0.1
Hysteresis – %FS		±0.1
Nonrepeatability – %RO		±0.05
Creep, in 20 min – %		±0.1
TEMPERATURE		
Compensated Range	°F	+60 to +165
	°C	+15 to +75
Operating Range	°F	-55 to +200
	°C	-50 to +95
Effect on Output – % MAX	°F	±0.005
	°C	±0.010
Effect on Zero – %RO MAX	°F	±0.015
	°C	±0.018
ELECTRICAL		
Rated Output – mV/V (Nominal)		2.0
Zero Balance – %RO		±3.0
Bridge Resistance – Ohm (Nominal)		350
Excitation Voltage – VDC MAX		5
Insulation Resistance – Megohm		> 2500
MECHANICAL		
Calibration		Tension
Safe Overload – % CAP		1000**
Material	5 (lbf)	Aluminum
	20 (N)	
	25 - 50 (lbf)	Alloy Steel
	100 - 200 (N)	

### STANDARD CONFIGURATION



Model SMTM (shown)

### OPTIONS

- Cable length
- Custom calibration
- Standardized output
- Transducer Electronic Data Sheet (TEDS)
- Add connector to cable
- Special temperature range

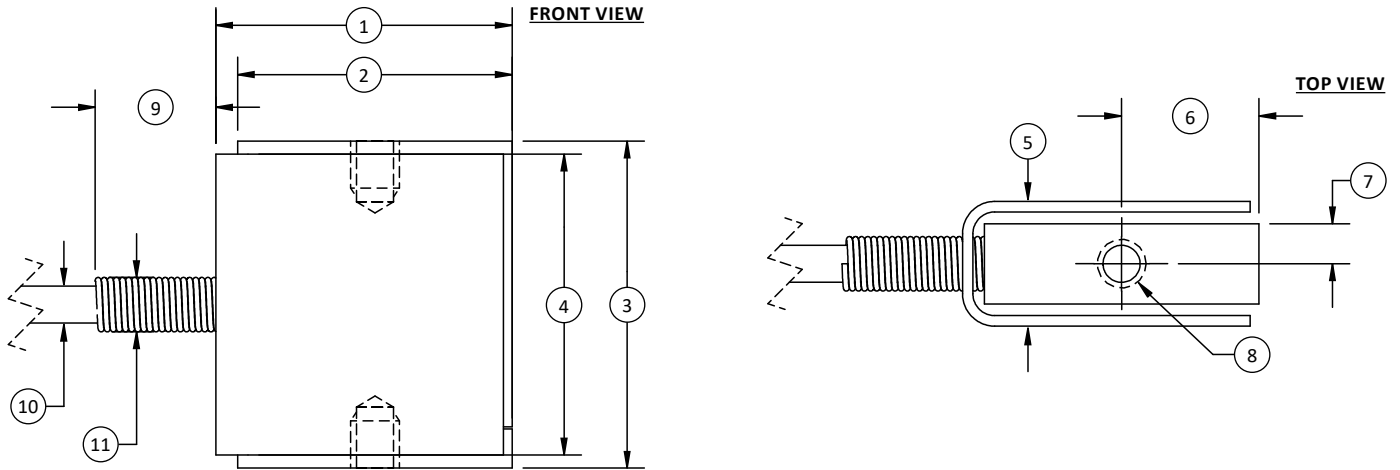
### ACCESSORIES

- Instrumentation
- Mounting hardware

### CONNECTION OPTIONS

- 5 ft (1.5 m) integral cable

## SMTM MICRO S-TYPE LOAD CELL



### DIMENSIONS

See Drawing	U.S. (in)	Metric (mm)
(1)	0.68	17.3
(2)	0.63	16.0
(3)	0.75	19.1
(4)	0.69	17.5
(5)	0.29	7.3
(6)	0.32	8.0
(7)	0.09	2.3
(8)	#4-40 UNC-2B $\downarrow$ 0.11	M3x0.5-6H $\downarrow$ 2.8
(9)	0.27	6.9
(10)	$\varnothing$ 0.08	$\varnothing$ 2.1
(11)	$\varnothing$ 0.13	$\varnothing$ 3.3