

## T27 HOLLOW FLANGE ROTARY TORQUE TRANSDUCER (US & METRIC)

### FEATURES & BENEFITS

- Capacities from 5 to 1K Nm (44.3 to 8.85K lbf-in)
- $\pm 5V$  output
- Very short axial length
- Large thru-hole design
- Bearingless

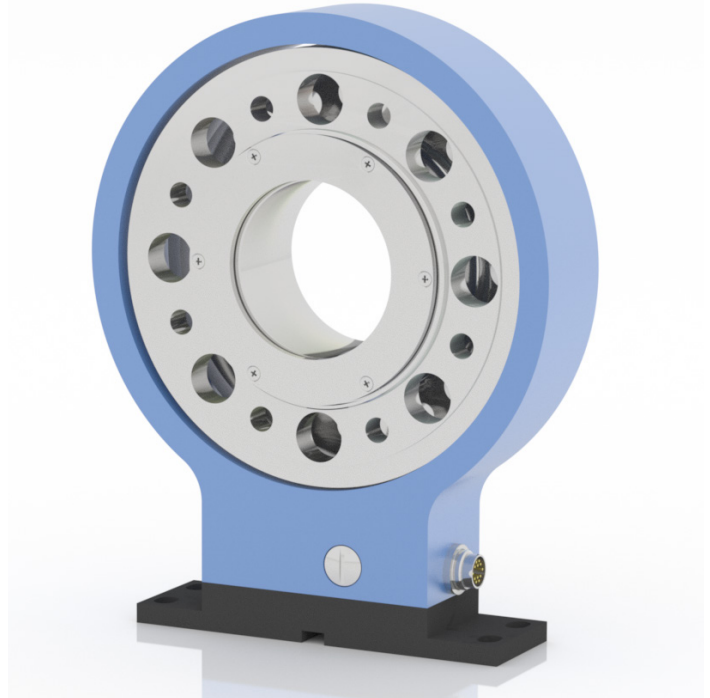
### SPECIFICATIONS

ACCURACY – (MAX ERROR)		
Combined Error – %FS		$\pm 0.1$
Non-repeatability – %RO		$\pm 0.02$
TEMPERATURE		
Effect on Zero – %RO / °C		$\pm 0.02$
Effect on Output – % / °C		$\pm 0.01$
Compensated Range	°C	+5 to +45
	°F	+41 to +113
Operating Range	°C	0 to +60
	°F	+32 to +140
ELECTRICAL		
Output – VDC		$\pm 5$
Bandwidth – kHz – dB		1 – 3
Supply Voltage – VDC		12 - 28
Supply Current – mA		90
Electrical Connection		12-pin binder
Resolution		Analog
MECHANICAL		
Safe Overload – %RO		200
Balance Grade – DIN ISO 1940		6.3
IP Rating		54
Material		Alloy steel

### OPTIONS

- $\pm 10V$  output
- Speed measurement – 30 pulse, +5V TTL

### STANDARD CONFIGURATION

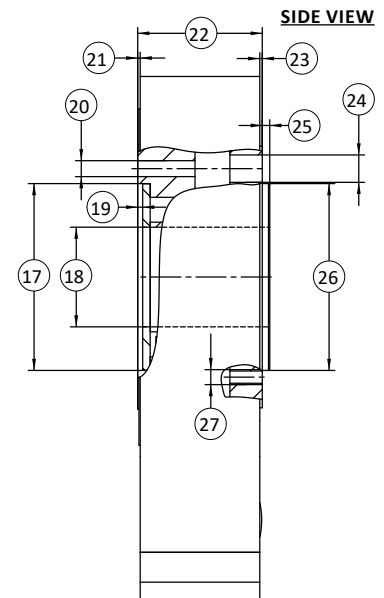
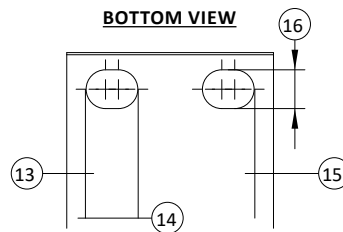
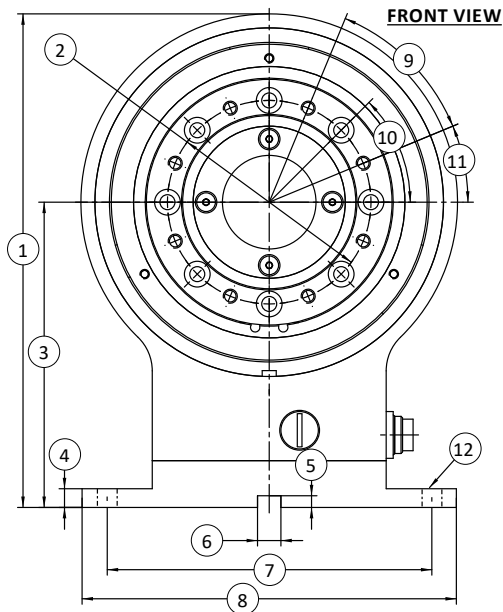


Model T27 (Shown)

## T27 HOLLOW FLANGE ROTARY TORQUE TRANSDUCER (US & METRIC)

### DIMENSIONS

See Drawing	CAPACITIES					
	Metric (Nm)	U.S. (lbf-in)	Metric (Nm)	U.S. (lbf-in)	Metric (Nm)	U.S. (lbf-in)
	50, 100	443, 885	200	17.7K	500, 1000	4.43K, 8.85K
	mm	in	mm	in	mm	in
(1)	211	8.3	230	9.1	250	9.8
(2)	Ø87 <sup>+0.1</sup>	Ø3.4 <sup>+0.004</sup>	Ø105 <sup>+0.1</sup>	Ø4.1 <sup>+0.004</sup>	Ø133 <sup>+0.1</sup>	Ø5.2 <sup>+0.004</sup>
(3)	130.5 <sup>+0.1</sup>	5.14 <sup>+0.004</sup>	140 <sup>+0.1</sup>	5.5 <sup>+0.004</sup>	150 <sup>+0.1</sup>	5.9 <sup>+0.004</sup>
(4)	8	0.3	8	0.3	8	0.3
(5)	5	0.2	5	0.2	5	0.2
(6)	10 <sup>+0.2</sup>	0.4 <sup>+0.008</sup>	10 <sup>+0.1</sup>	0.4 <sup>+0.004</sup>	10 <sup>+0.1</sup>	0.4 <sup>+0.004</sup>
(7)	144 <sup>±0.1</sup>	5.7 <sup>±0.004</sup>	144 <sup>±0.1</sup>	5.7 <sup>±0.004</sup>	144 <sup>±0.1</sup>	5.7 <sup>±0.004</sup>
(8)	160	6.3	160	6.3	160	6.3
(9)		45°		45°		45°
(10)		45°		45°		45°
(11)		22.5°		22.5°		22.5°
(12)		M8x4		M8x4		M8x4
(13)	4.5	0.18	4.5	0.18	4.5	0.18
(14)	12	0.5	12	0.5	12	0.5
(15)	4.5	0.18	4.5	0.18	4.5	0.18
(16)	9	0.4	9	0.4	9	0.4
(17)	Ø75 H7	Ø2.9539 / 2.9527	Ø90 H7	Ø3.5447 / 3.5433	Ø110 H7	Ø4.3321 / 4.3307
(18)	Ø40 <sup>+0.2</sup>	Ø1.6 <sup>+0.008</sup>	Ø45 <sup>+0.2</sup>	Ø1.78 <sup>+0.008</sup>	Ø70 <sup>+0.2</sup>	Ø2.8 <sup>+0.008</sup>
(19)	2	0.1	3	0.1	3	0.1
(20)	Ø6.4	Ø0.25	Ø8.4	Ø0.33	Ø13	Ø0.5
(21)	1	0.04	1	0.04	1	0.04
(22)	50	2.0	50	2.0	50	2.0
(23)	1	0.04	1	0.04	1	0.04
(24)	Ø11	Ø0.4	Ø14	Ø0.6	Ø20	Ø0.8
(25)	3	0.1	3	0.1	3	0.1
(26)	Ø75 g6	Ø2.9523 / 2.9516	Ø90 g6	Ø3.5428 / 3.5420	Ø110 g6	Ø4.3302 / 4.3294
(27)		M6		M8		M12



T27 v1.1 03-20-2018